

IHE

An Introduction for Radiation Oncology

Bruce Curran
University of Michigan
AAPM Liaison to WG-7

Acknowledgements

(http://www.rsna.org/IHE/presentations/ihe_pres_index.shtml)

- David Channin M.D.
 - Why does IHE matter?
- Kevin O'Donnell
 - What does IHE offer?
- John Paganini
 - How do you get IHE?
- Charles Parisot
 - How available is IHE?
- Paul Nagy Ph. D.
 - What can IHE do for you?

SCAR 2003



What is IHE?

Initiative promoting and supporting the integration of systems in the healthcare enterprise

Improve the efficiency and effectiveness of clinical practice by improving information flow

What is IHE?

- Standards based communication between systems
- **Actors**: perform communications roles between systems
- **Transactions**: messages sent between systems
- **Integration Profiles**: grouping of actors and transactions to perform specific workflows
 - Scheduled workflow

The IHE Connectathon

Supervised by Sponsor Organizations:

- IHE is not only "paper"
- Engage Vendors : commit to cooperation
- Synchronize Implementations
- Checks quality of Technical Framework
- Unique opportunity to test in non clinical
- Demonstrates coverage for vendor

**Actual systems interacting
with real IHE transactions**

Finding about IHE Products

- IHE introduced at RSNA 2002 the means to effectively communicate about IHE Capabilities in Products:

The IHE Integration Statement.

- A means for vendors to state explicitly the integration capabilities of each one of their products.
- A means for users to find-out, compare, and hold vendors responsible to meet their IHE Commitment.

A Product needs an IHE Integration Statement

IHE Integration Statement

<i>Vendor</i>	<i>Product Name</i>	<i>Version</i>	<i>Pub. Date</i>
Any Medical Systems	Great PACS	V1.0	26 Nov 2002
<i>This product supports:</i>			
<i>Integration Profiles</i>	<i>Actors</i>	<i>Options Implemented or available</i>	
Scheduled Workflow	Image Manager/Image Archive (includes an Image Display)	none	
Patient Information Reconciliation	Image Manager/Image Archive	none	
Access to Radiology Information	Image Manager	none	
<i>Link to vendor IHE page</i>		any.com/ihe	
<i>Links to Standards Conformance Statements of the Implementation</i>			
DICOM		any.com/dicom	
For general information on IHE		www.rsna.com/ihe or www.ihe-europe.org	

IHE Product Mix

Based on IHE Integration Statements referenced on June 2003 from those 9 vendors, 74 products:

- Modalities: 53 (CT, MR, US, X-Ray, NM)
- PACS: 5 products
- Printers 4 products
- Wrkstn/Web: 9 products
- RIS: 2 Products
- HIS 1 Product

IHE Profile Mix

Based on IHE Integration Statements referenced from those 74 products from 8 vendors :

IHE INTEGRATION PROFILES	# Products
■ Scheduled Workflow	71
■ Patient Info Reconciliation	57
■ Consistent Presentation of Images	31
■ Presentation of Grouped Procedures	5
■ Key Image Notes	3
■ Simple Image and Numeric Reports	4
■ Access to Radiology Info	10
■ Basic Security	2
■ Charge Posting	0
■ Post-Processing Workflow	0

Where can we take RT?

- Integration with the world outside RT
 - Scheduling
 - Billing
 - Combined Modality Treatment
- Move from **Communication** to **Process!**

IHE is easier than DICOM

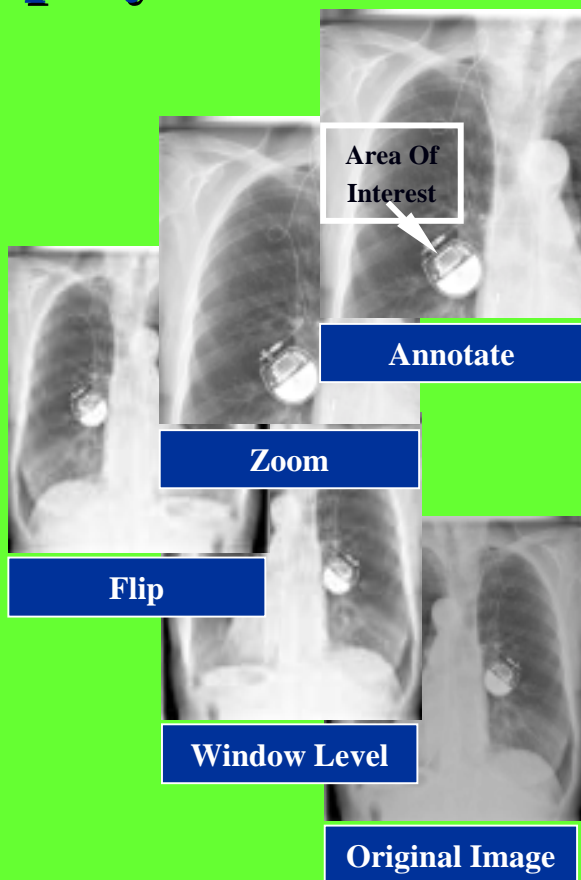
- And more reliable
- IHE sits atop DICOM and HL7
- Is more stringent in mandatory fields to enable workflow

Scheduled Workflow Benefits

- Reduced Manual Data Entry
 - Increased efficiency, decreased error rates
- Digital Scheduling, Tracking & Data
 - Managed workflow
 - Order loop closure, better billing
 - Paperless
 - Up to the minute status, distributed access
 - Filmless
 - Rapid distribution, rapid access

Consistent Presentation of Images Profile

What the Radiologist Displays:



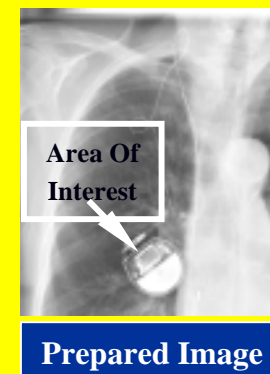
Original Image & Presentation State

The Radiologist's Transformations Are Saved

Original Image

The Radiologist's Transformations Are Lost

What the Reviewing Physician Sees:

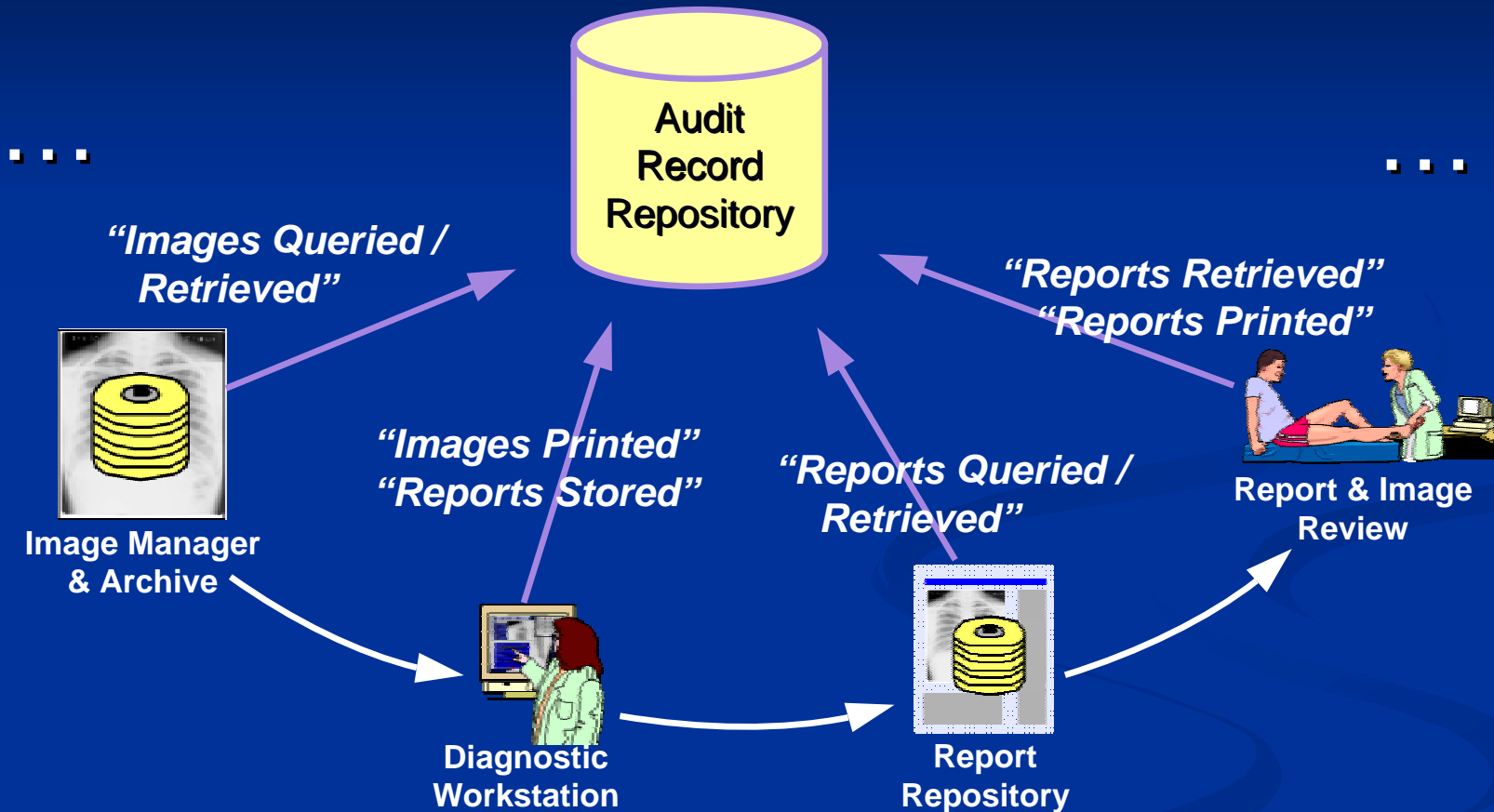


Consistent Presentation of Images

Benefits

- More Consistent Views
 - Referring sees same thing as Radiologist
 - Softcopy matches Hardcopy
- Less Work
 - don't have to repeat manipulations
 - don't have to calibrate every imaging device to every display device

Basic Security Profile



Basic Security Benefits

- Centralized Activity Auditing
 - Monitor/Audit HIPAA policy conformance
 - Measure Departmental performance
- Improved Security